



FLEMING®

THE ULTIMATE CRUISING YACHT

85

After hundreds of years of combined experience designing, building and cruising, Fleming Yachts are bringing to you what will be the ultimate of cruising yachts. A brand new design - the Fleming 85.

Our design brief is to create literally the finest possible ocean going pilothouse motor yacht, in every respect. With true ocean crossing capability the Fleming 85 will take you anywhere you want to be in the world, in total comfort, grace and peace of mind.

Open flybridge



Enclosed flybridge

Here the pilothouse is moved to the upper deck where it is fully enclosed and fully outfitted like a Fleming pilothouse should be. Down below that extra space is opened up for more flexible dining and entertaining options.

Both models are available in 3 or 4 cabin layouts, with single or double crew cabins.





The lines and the look are unmistakably classic Fleming. But the exterior details have been refined and simplified with flush and hidden hardware throughout. There will be large storage and seating areas forward and aft and as always multiple easy access boarding gates.

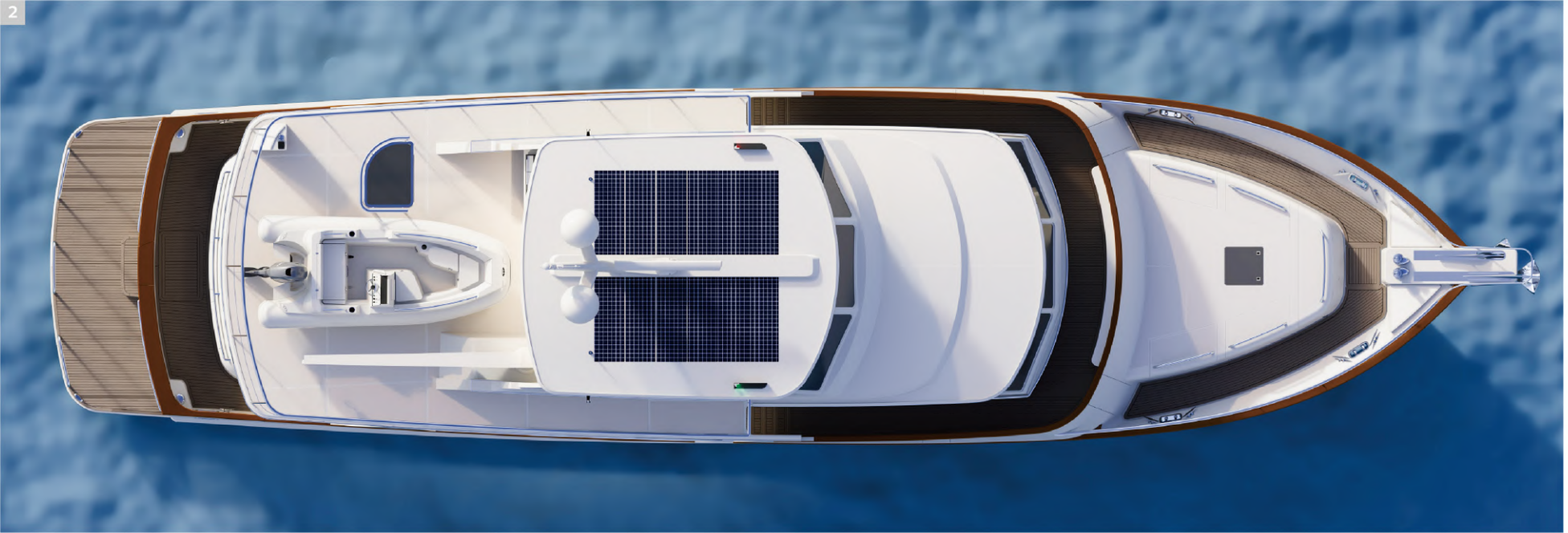


All Fleming yachts are renowned for having a high level of standard equipment. And as this is our flagship we have gone all out. For instance, six well located docking stations equipped with joystick controls and position hold make operating the 85 simple and safe, even when shorthanded.

1 Storage for fenders, fishing and diving gear plus joystick controls port and stbd.

2 Sheltered and private access to engine room and crews quarters.





Imagine being anchored in your favorite bay, the solar panels are topping up lithium-ion batteries which in turn are running the at-rest stabilisers keeping everyone comfortable and in peace and quiet as there's no need to run a generator.

- 1 The optional platform lift can facilitate easy launching of additional PWC.
- 2 The standard 2200lb davit can launch the tender on port or stbd sides.



*Open flybridge



*Enclosed flybridge

Open Flybridge



■ Flybridge



■ Pilothouse



■ Salon / Galley



■ Salon / Galley

Enclosed Flybridge



■ Pilothouse



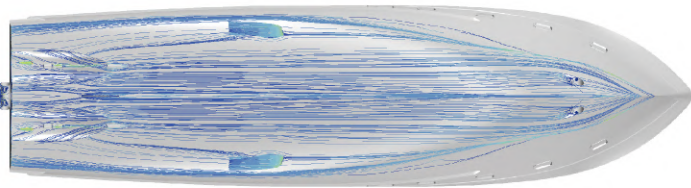
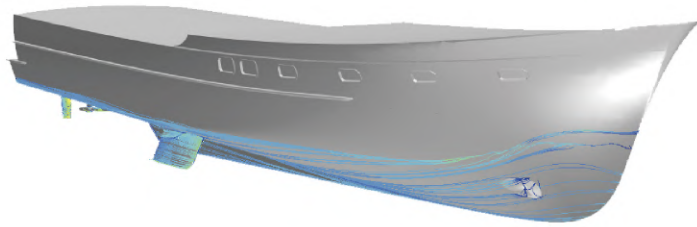
■ Raised galley



■ Salon / Dining



■ Salon / Dining

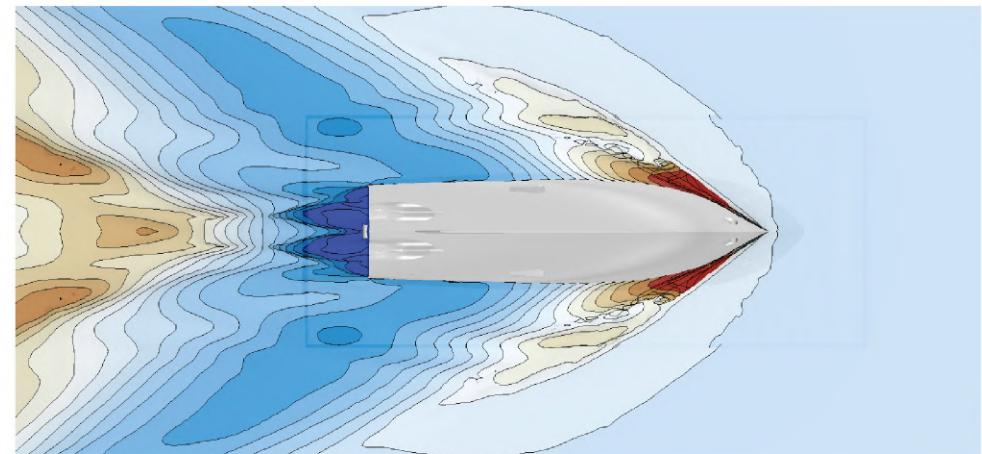
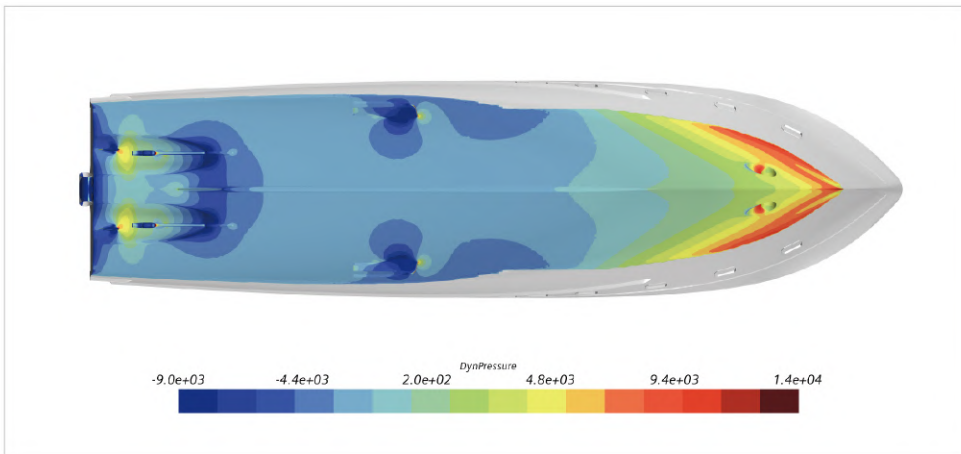


Hull design and CFD

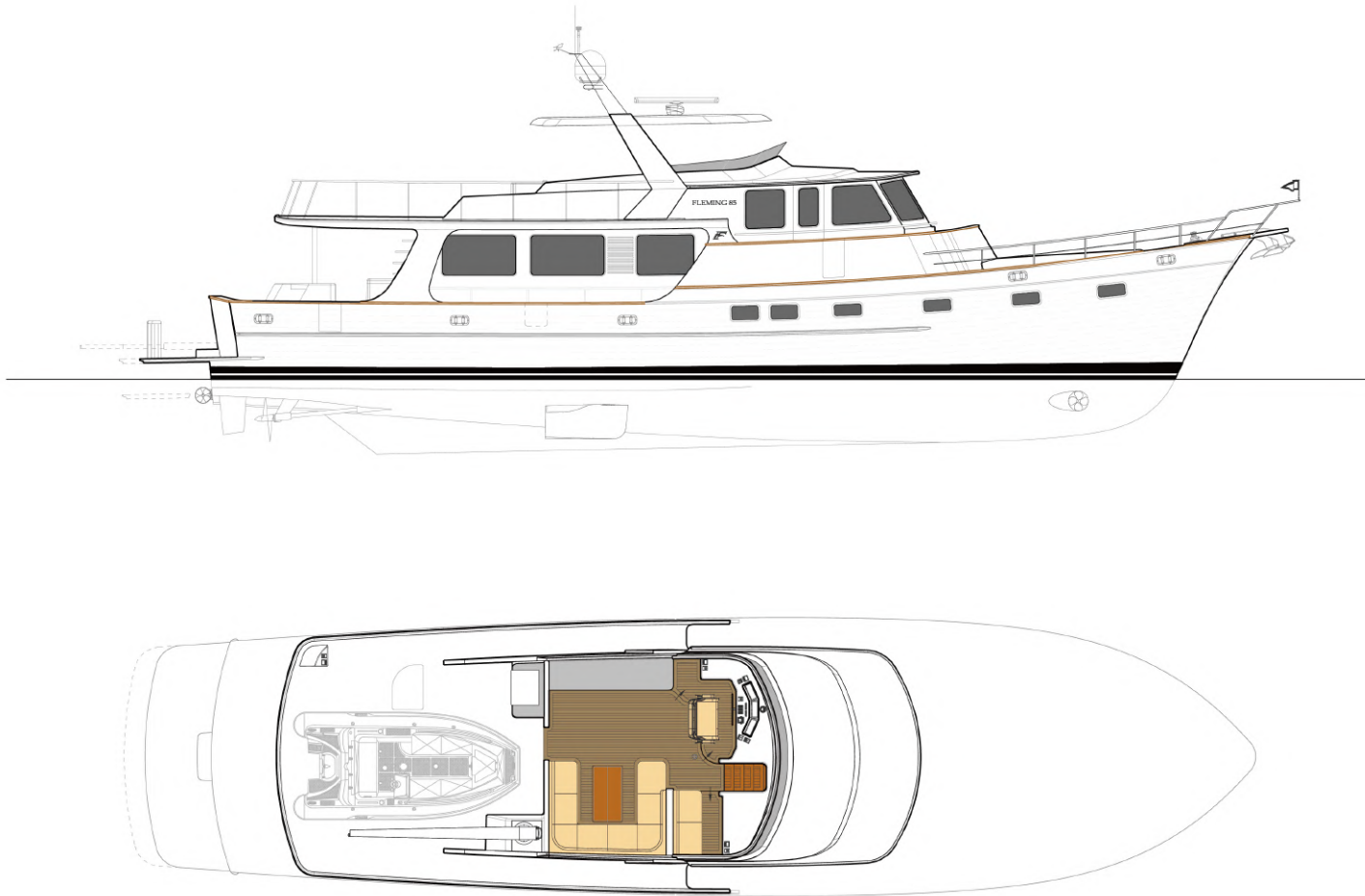
From the renowned naval architects of Norman R. Wright and Sons the semi displacement hull is designed not only to be the most efficient, but also the most beautiful on the water.

Building on their experience we have also worked with Computational Fluid Dynamics experts at Cape Horn Engineering. With their software and knowhow we have been able to fine tune the hull design to ensure it is not only best performing but also handles all conditions at sea. The combination of this will result in the best fuel economy and range of any semi displacement yacht in the world.

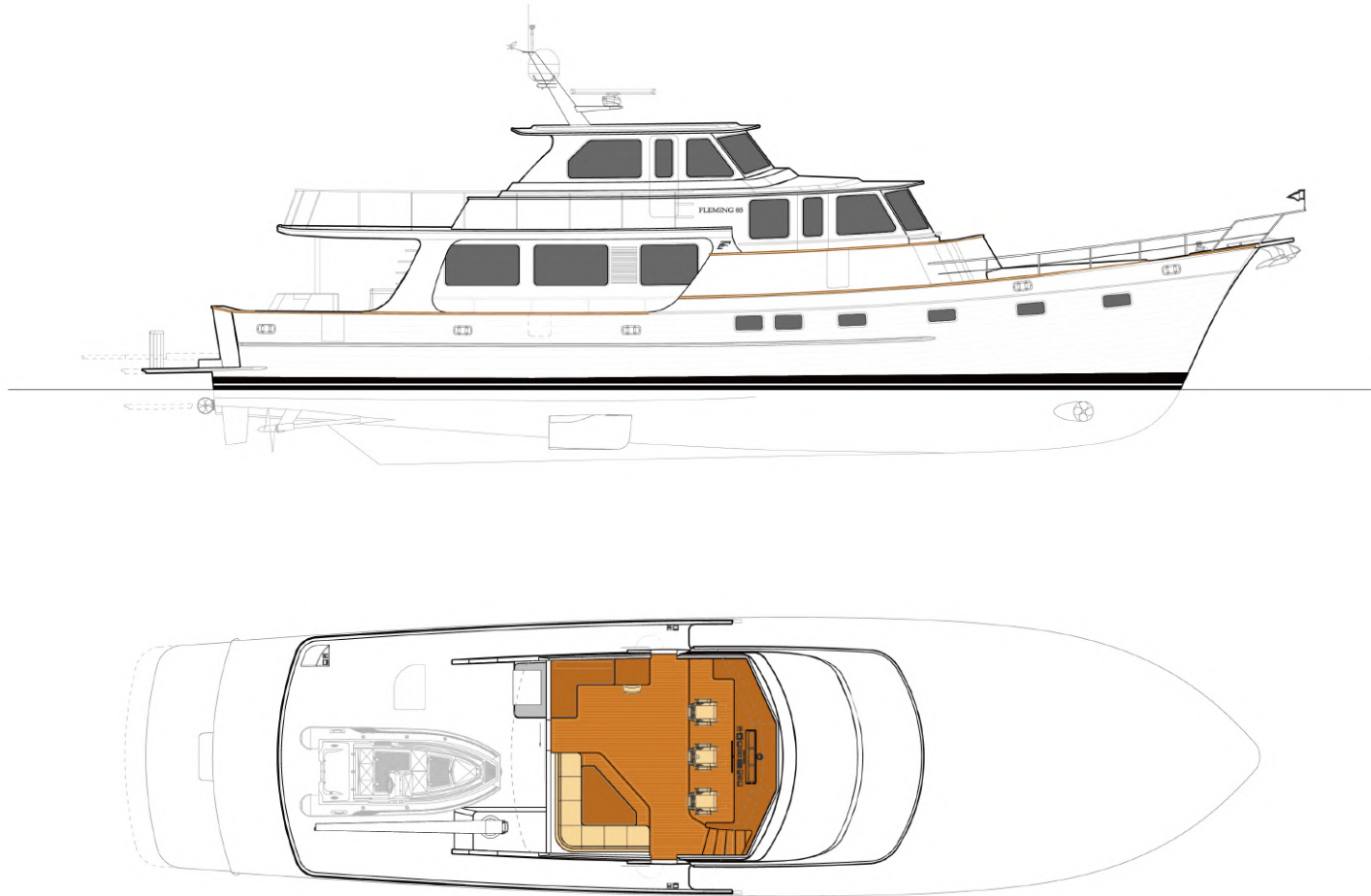
Composite engineers have designed the optimum strength/weight ratio of the structure, so we retain the traditional robust construction you would expect from Fleming – but it is achieved with less weight and is all verified by DNV.



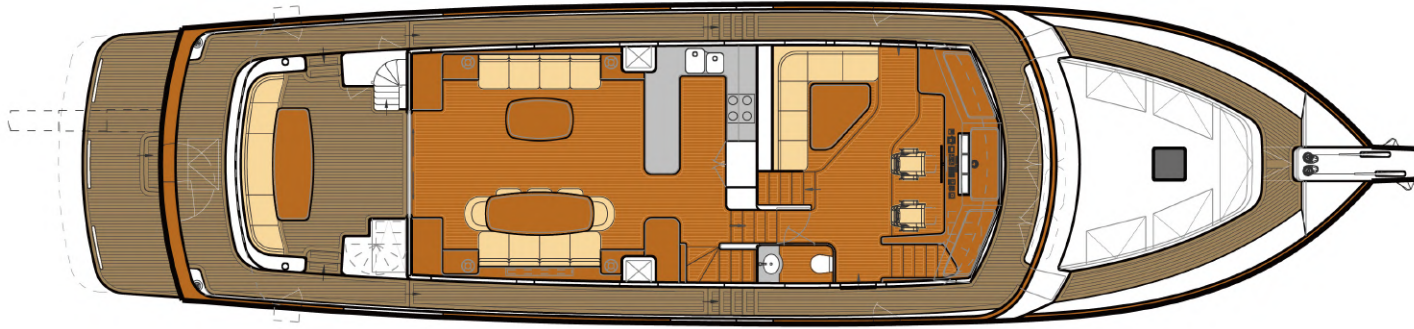
Open Flybridge



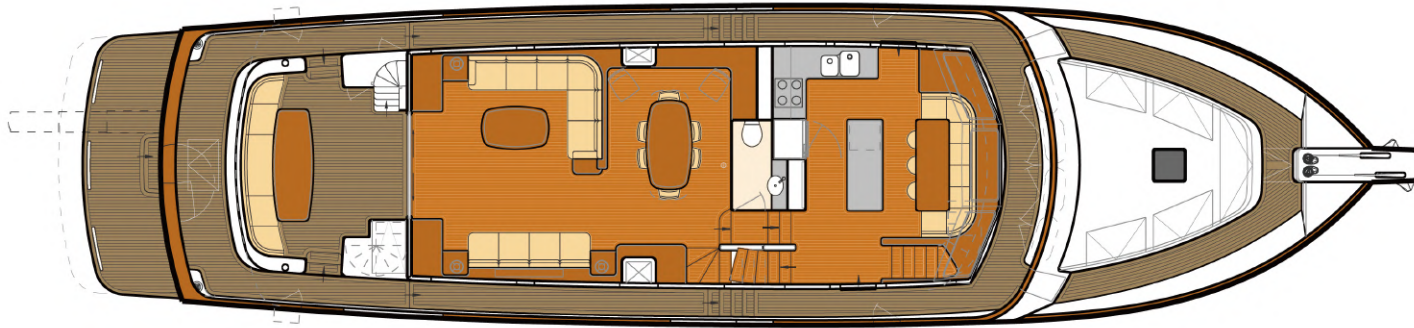
Enclosed Flybridge



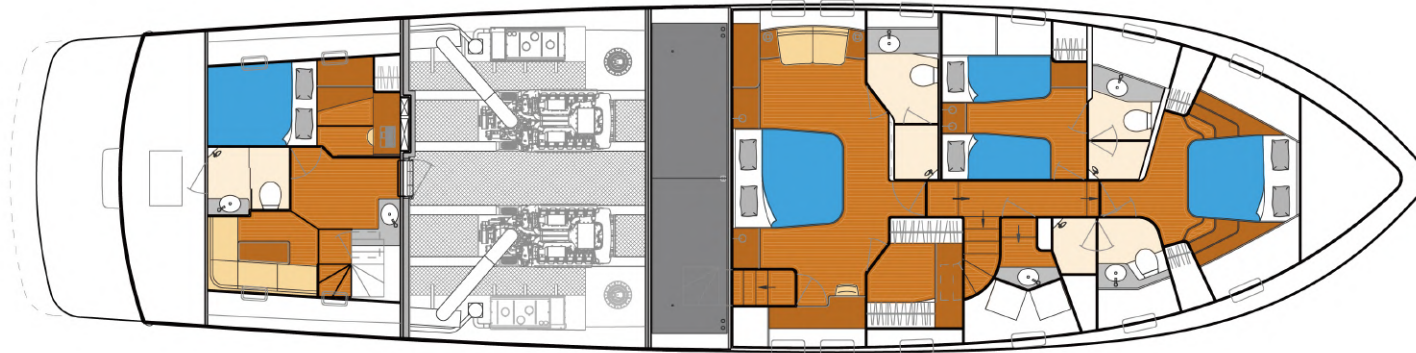
Open Flybridge Main deck



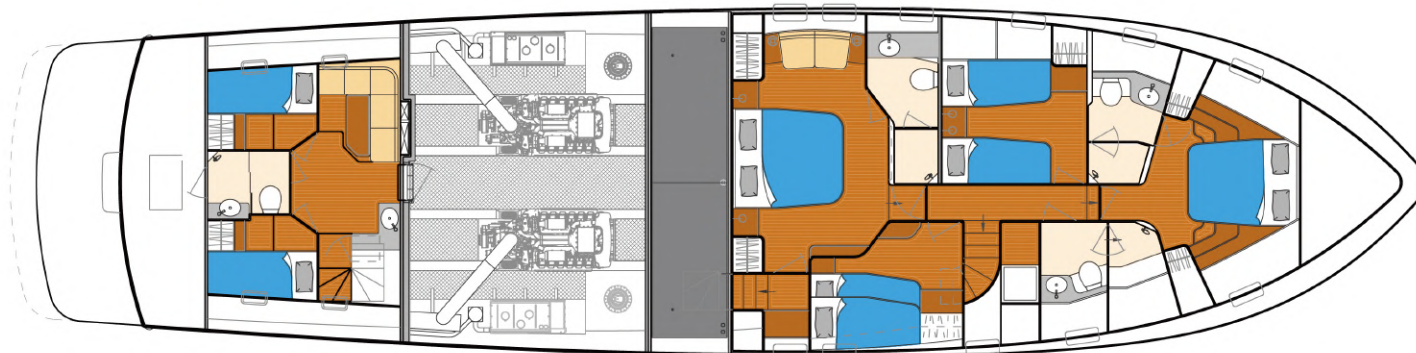
Enclosed Flybridge Main Deck



Accommodations



Crew quarters Option A
3 cabin layout



Crew quarters Option B
4 cabin layout

Standard Specifications and equipment

LOA	85' 2" (25.98m)
Beam Max	21' 2" (6.48m)
Draft	5' 5" (1.69m)
W/L to top of mast	26' 6" (8.10m)
Displacement min	165,048 Lbs. (74,865kg)
Displacement max	197,800 Lbs. (89,721kg)
Main Engines	Twin MAN V12-1550 HP @ 2,300 RPM
Transmissions	Twin Disc MGX 6599A with Quickshift
Engine Controls	Twin Disc EC300 with EJS and EPS
Driveline	Aqua Drive CV60 & HDL 780HT
Generators	Two Onan eQD 29 Kw 240v 60Hz (27Kw 230v 50Hz)
Stabilizers	Humphree 16 sq. ft (1.5 sq. m) fins zero-speed, 24 vdc
Interceptors	Humphree (Active Ride Control System)
Bow Thruster	Twin Disc BP600 82HP Hydraulic
Stern Thruster	Twin Disc BP400 47HP Hydraulic
Diesel Fuel	3,170 USG (12,000 Liters)
Fresh Water	500 USG (1,900 Liters)
Black Water Tank	224 USG (850 Liters) in single FRP tank
Grey Water Tank	224 USG (850 Liters) in single FRP tank

Lithium ion batteries | Solar panels | 6 x joystick control stations | 2200lb Steelhead davit | Boatdeck for 17' tender storage | Twin Ultra anchors with hi tensile s/s chain
Twin Maxwell windlasses | Black water treatment system | Double glazed windows for thermal insulation | Watermaker, Warming winches and all the best subsidiary
equipment available

*To ensure every Fleming is as functional, convenient and safe as possible, Fleming Yachts reserves the right to make changes to specifications and equipment without notice.

THE FLEMING 85

All Fleming Yachts are sold through our world wide dealer network – most of whom have represented us for many years. Staffed by people with enormous experience of operating, servicing and selling Fleming Yachts – they all stand firmly behind the product and provide after sales service second to none.



Burr Yacht Sales USA - Maryland

1106 Turkey Point Rd, Edgewater, MD 21037
Phone: +1 (410) 798-5900 Email: info@burryachtsales.com
Website: www.burryachtsales.com

Marstrand Yachts - Scandinavia

Hamngatan 25 A, 442 67, Marstrand, Sweden
Phone: +46 735 430 800 Email: info@marstrandyachts.com
Website: www.marstrandyachts.com

Orakei Yacht Sales - New Zealand

12-14 Tamaki Drive, The Landing D Pier, Orakei Marina
Phone: +64 (9) 524 8444 Email: jason@orakeimarina.co.nz
Website: www.orakeimarina.co.nz/launch-brand/fleming-yachts/

Chuck Hovey Yachts USA - Newport Beach

717 Lido Park Dr - Suite A, Newport Beach, Ca 92663
Phone: +1 (949) 675-8092 Email: info@chuckhoveyyachts.com
Website: www.chuckhoveyyachts.com

Emek Marin - Turkey

No: 8 Fethiye/Mugla, Turkey
Phone: +90 252 645 1551 Email: cagdas@emekmarin.com
Website: www.emekmarin.com

First Marine Ltd. - Japan

1448-5 Kamiyamaguchi Hayama Miura, Kanagawa 240-0115 Japan
Phone: +81 (46) 879-2111 Email: info@firstmarine.co.jp
Website: www.firstmarine.co.jp

Fleming Yachts Canada - Vancouver

1535 Coal Harbour Quay, Vancouver, BC V6G 3E7
Phone: +1 (604) 689-1151 Email: info@flemingyachtscanada.ca
Website: www.flemingyachtscanada.ca

Fleming Yachts Australia Pty Ltd

Unit 6, 1 Bradly Avenue, Kirribilli NSW 2061 Australia
Phone: +61 (2) 8920 1444 Email: info@flemingyachts.com.au
Website: www.flemingyachts.com.au

Derani Yachts - Southeast Asia

Phuket Boat Lagoon - 20/37 Moo 2 Thepkrasattri Road, Phuket 83000, Thailand
Phone: +66 8 33 88 90 90 Email: ian@derani-yachts.com
Website: www.derani-yachts.com

Fleming Yachts Europe

Swanwick Marina - Swanwick, Southampton, Hampshire, UK SO31 1ZL
Phone: +44 1489 886855 Email: david@flemingyachts.eu
Website: www.flemingyachts.eu

Fleming Yachts - United Arab Emirates

Phone: +886 988 500 845
Email: information@flemingyachts.com
Website: www.flemingyachts.com

Fleming Yachts - Hong Kong

Central Hong Kong Phone: +886 988 500 845
Email: information@flemingyachts.com
Website: www.flemingyachts.com

